

Alto Sax

# M-07 Love Me Do

新郎新婦退場

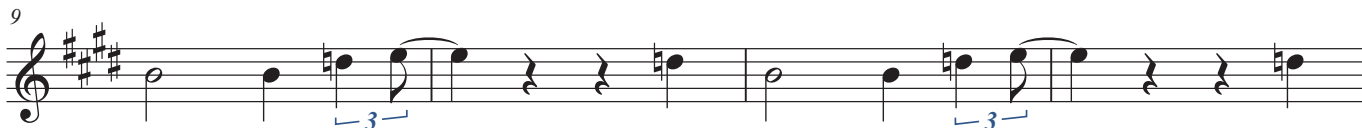
♩ = 155

Intro.

1st Tacet



A



B

E 4beat  
ad lib solo

A

E

A

E

X-Time



全員がハケ終わってから、  
音楽を聞かせるために少しの間演奏してから終わる。

Piano

# M-07 Love Me Do

新郎新婦退場

♩ = 155

キャンディ先生のカウントでスタート

**Intro.**

Piano

G C G C

The introduction consists of four measures. The first measure has a G chord in the right hand and a half note G in the left hand. The second measure has a C chord in the right hand and a half note C in the left hand. The third and fourth measures feature a G chord in the right hand and a half note G in the left hand, with a triplet of eighth notes in the right hand.

Pno.

G C G G

Measures 5-8. Measure 5: G chord, half note G. Measure 6: C chord, half note C. Measure 7: G chord, half note G. Measure 8: G chord, half note G. Triplet eighth notes are present in measures 6 and 8.

Pno.

**A** G C G C

Measures 9-12. Measure 9: G chord, half note G. Measure 10: C chord, half note C. Measure 11: G chord, half note G. Measure 12: C chord, half note C.

Pno.

G C C C C x2

Measures 13-17. Measure 13: G chord, half note G. Measure 14: C chord, half note C. Measure 15: C chord, half note C. Measure 16: C chord, half note C. Measure 17: C chord, half note C. The section ends with a repeat sign and a double bar line.

Pno.

**B** G C G C X-Time G

Measures 18-21. Measure 18: G chord, half note G. Measure 19: C chord, half note C. Measure 20: G chord, half note G. Measure 21: C chord, half note C. The section ends with a repeat sign and a double bar line.

全員がハケ終わってから、  
音楽を聞かせるために少しの間演奏してから終わる。